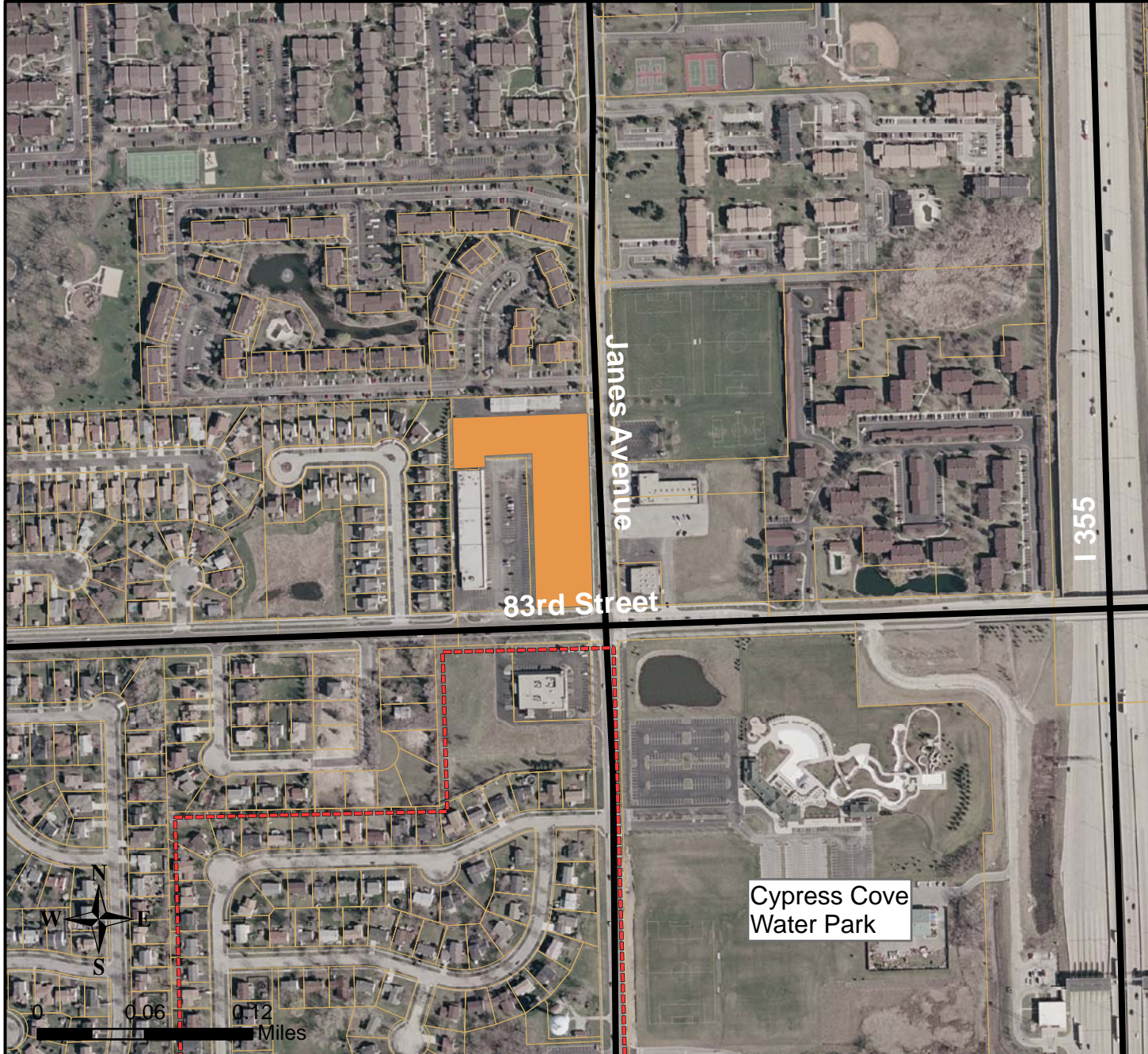


Site 11



Total Acres: 3.1
Zoning: B-2 Community Shopping District
Sanitary Sewer Service: DuPage County
Water Supply: Village of Woodridge
Electrical: ComEd
Natural Gas: NICOR
Telecommunications: SBC or Comcast

PINs: 08-36-105-006

Conveniently located at the intersection of 83rd Street and Janes Avenue. Prospective uses include neighborhood commercial, retail, and office. Development area is an out-parcel of an existing neighborhood commercial shopping center. Suitable for expansion of the strip mall and outlot developments, or redevelopment of strip mall. This parcel is part of the Village's Tax Increment Financing (TIF) District. Call the Village Planning and Development Department for details.

Contact: Affiliated Realty
7120 W. Algonquin Road
Mount Prospect, IL 60056
(847) 439-0400

