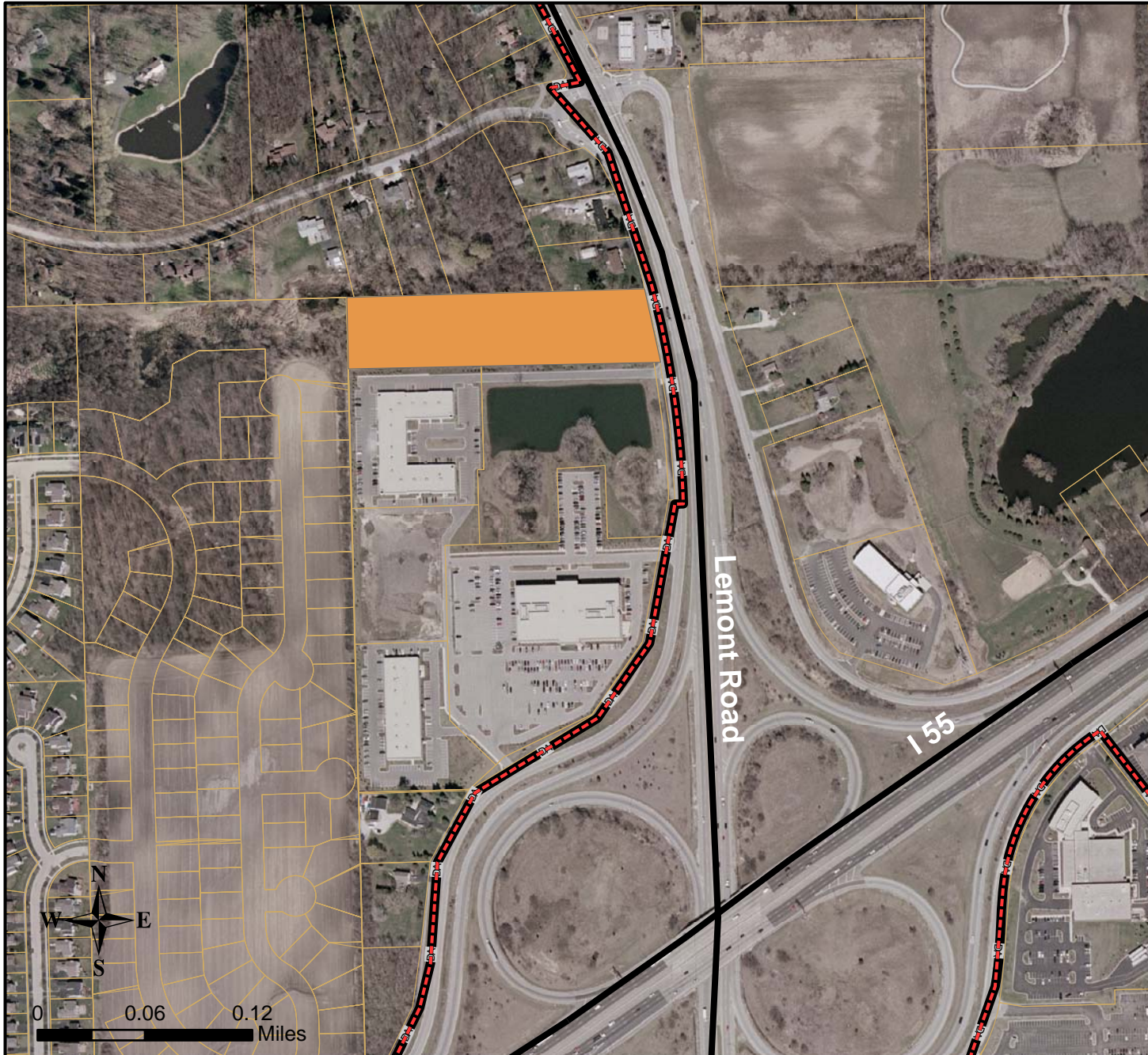


# Site 15



Total Acres: 3.8  
Zoning: ORI Office, Research and Light Industrial

Sanitary Sewer Service: DuPage County  
Water Supply: Village of Woodridge  
Electrical: ComEd  
Natural Gas: NICOR  
Telecommunications: SBC or Comcast

PINs: 10-05-300-044  
10-05-300-045

This site is ideal for office use due to its excellent access and high visibility from Lemont Road. I-55 is within ½ mile and is easily accessible from Lemont Road. Waterfall Glen Business Park is located just south of the site.

Contact: Village of Woodridge  
Planning and Development  
5 Plaza Drive  
Woodridge, IL 60517  
(630)719-4711

